

CPS AC-PLC KIT-800V/US for CPS 800 Vac Inverters



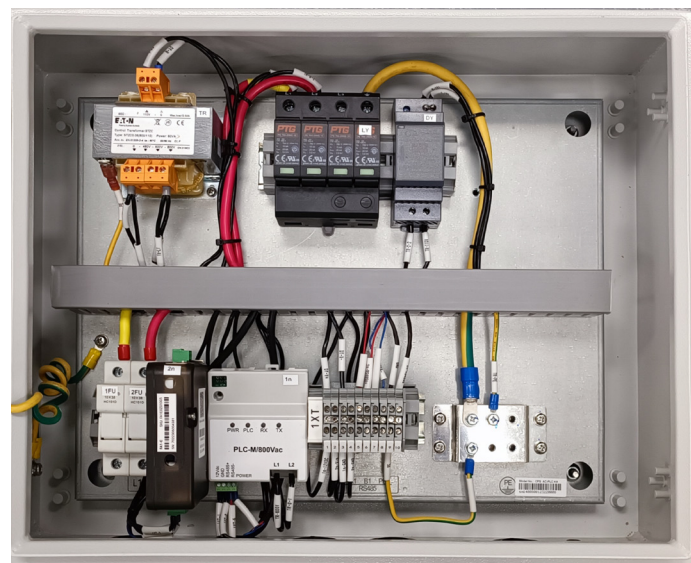
The CPS AC-PLC KIT 800V/US is designed for the implementation of power line communication (PLC) over the AC conductors on the low-voltage side of a PV system enabling a low-cost and reliable solution for data communication and control of the CPS 275 kW and 350 kW inverters.

At the signal source side, the PLC modulation device inside the CPS AC-PLC KIT transforms the data to be transmitted into high-frequency signals through a series of operations such as encoding and modulation, and couples the high-frequency signals to the AC conductors through coupling circuits. At the receiver end within each 250/275KTL inverter, the PLC demodulation device separates and restores the modulated data carrier signals to their original form.

The CPS AC-PLC KIT includes the FlexOM Gateway, 12 Vdc power supply, and surge and over-current protection, all mounted and pre-wired in a weatherproof NEMA 4X enclosure.

Key Features

- Low-cost PLC communication solution
- Preconfigured for plug-and-play
- Integrated FlexOM Gateway
- Compatible with CPS FlexOM Monitoring platform
- All hardware mounted and pre-wired
- NEMA 4X outdoor rated enclosure
- Provisions for padlock / LOTO
- Surge protection included
- Supports up to 32 devices
- Certified to UL 1741
- Supports distances up to 1000 ft



Internal View of AC-PLC KIT 800V/US



Model Name	AC-PL KIT-800V/US
Configuration	
DAS equipment	CPS FlexOM Gateway, Ethernet (standard)
AC-PLC communication device	Standard
Input Parameters	
Number of input circuits	1
OCPD type	Fuse, 1000 V, 16 A
Compatible inverter(s)	CPS SCH275KTL-DO/US-800, CPS SCH350KTL-DO/US-800
Input voltage	800 Vac, 50/60 Hz
Input conductor size	#6-#14 AWG CU
Output Parameters	
Convenience outlet	120 Vac, 50/60 Hz, 15 A
DC power supply	12 Vdc, 2 A
FlexOM Gateway	
RS485 port / inverter daisy-chain	Isolated RS485, max. 32 devices
Auxiliary port / third-party data logger	AUX port, isolated 3-pin RS485, A+ / B- / G
FlexOM service / third-party data server	Internet, primary MQTT/Internet, HTTPS or secondary MQTT
Ethernet port / SCADA client	RJ45, 10Base-T / 100Base-T, Ethernet port, Modbus/TCP
Mechanical	
Dimensions (W × H × D)	13.8 × 13.8 × 5.9 in (350 × 350 × 150 mm)
Weight	39.7 lb (18 kg)
Padlockable enclosure (LOTO)	Yes
Installation method	Wall- or rack-mounted
Conduit knockouts	Pre-punched, 1" trade size (5 each)
Environment	
Enclosure Protection Degree	NEMA Type 4X
Operating temperature range	-22°F to 140°F / -30°C to 60°C
Operating humidity	0-95%, non-condensing
Operating altitude	13123 ft / 4000 m (no derating)
Safety	
Certifications and standards	UL 1741, CSA-C22.2 NO.107.1-01, FCC Part 15B
Warranty	
Standard	2 years

