

Wi-Fi Communication Module (CPS) Quick Installation Guide

Model: CPS WiFi Module

Version: 2.0 Doc No.: 9.0020.0863B0

Date: 07-2025

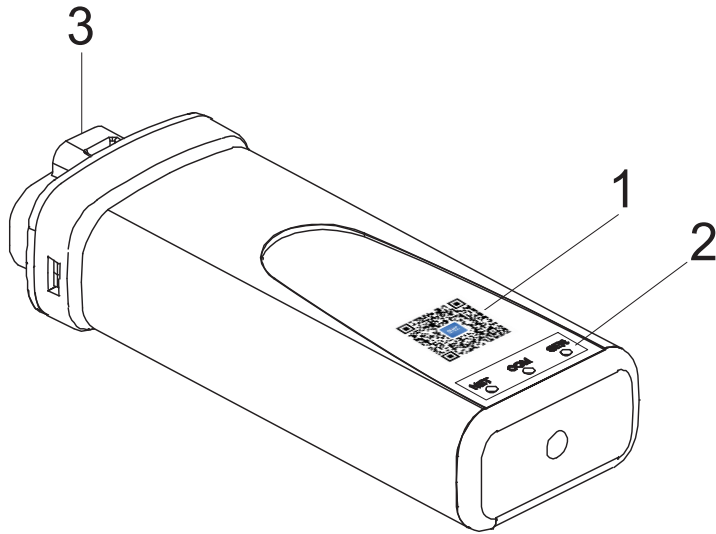
Shanghai Chint Power System Co., Ltd

Website: www.chintpower.com

Tel.: +86-021-37791222-866300

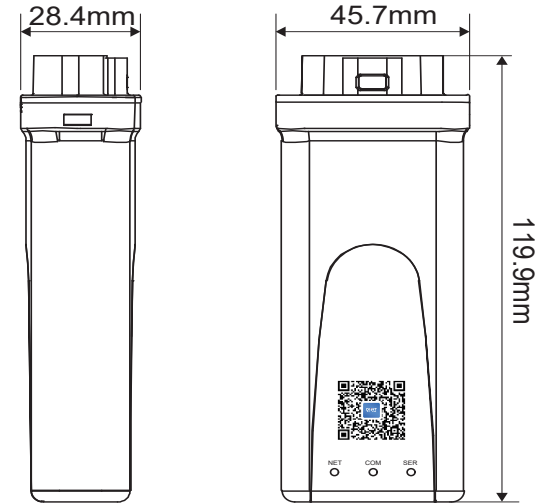
1. Product Introduction

1.1 Main components



Number	Name	Function
1	QR code	Download App
2	Indicator light	Indicates the working status of the communication module
3	USB interface	Connect the COM port on the inverter

1.2 Dimension

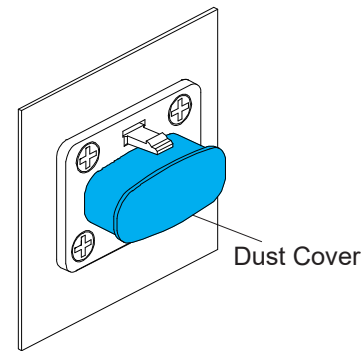


2. Installation

Step 1:

Unpack and remove the Wi-Fi communication module.

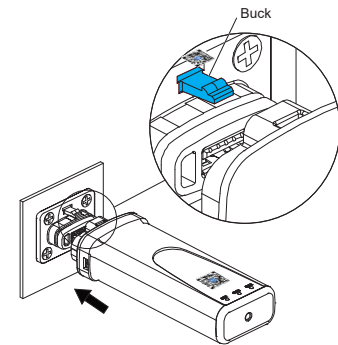
Remove the dust cover from the inverter wire end (refer to the following figure).



Step 2:

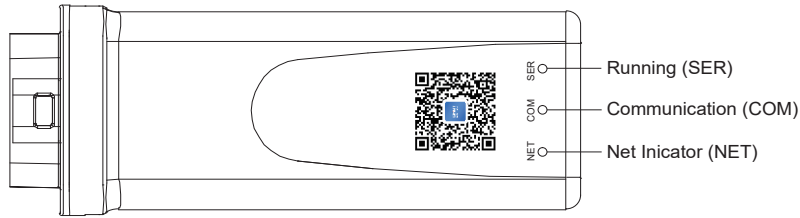
Insert the communication module into the corresponding COM port of the inverter, and when you hear a "click" sound, complete the installation.

Attention: To remove the Wi-Fi communication module, it is necessary to press the buckle (refer to the following figure).



Step 3: When the inverter is in a powered on state, the Wi-Fi communication module will automatically connect to the inverter.

3. Indicator



LED	Explain	LED Status	Status Description
Module running light(SER)	Wi-Fi communication module working state	Flashing once every 500ms	Module is working properly
		Flashing once every 80ms	Connected to App via Bluetooth
		Always on or off	Abnormal module operation
Inverter communication light (COM)	Communication status between WiFi communication module and inverter	Always on	Normal communication with inverter
		Off	Abnormal communication with inverter
Networking indicator light (NET)	Communication status between WiFi communication module and server	Always on	Normal connection to the server
		Off	Abnormal communication with server

4. Troubleshooting

No.	Status	Troubleshooting methods
1	SER indicator light off	If necessary, please open the cover and use a multimeter to measure whether the power supply voltage of the base plate is DC5.0V.
		If the power supply voltage is normal and the SER indicator light is still not on, it can be determined that the WiFi communication equipment module is faulty. Please call our company's after-sales server hotline.
2	COM indicator light off	Check if the WiFi communication module is reliably connected to the photovoltaic inverter, and if the connector is loose. If necessary, open the cover to check if the USB interface of the module is loose.
3	NET indicator light off	Please be patient and wait. If it remains flashing for a long time (more than 30 minutes), please call the after-sales server hotline.

Note: The service hotline can be found on the cover.

5. APP

After the Wi-Fi module is running normally, you can perform local control and other operations through the mobile App.

Please use your phone to scan the QR code below and download the MatriCloud App. For specific operations, please refer to the relevant content in the inverter manual.



Note: Compatible with mobile devices running Android 8.0+ or iOS 13.0+.

Note: After the Wi-Fi module starts up (at which point the SER indicator flashes at 500ms intervals), if the NET indicator does NOT light up within 40 seconds, DO NOT connect the Wi-Fi module to the MatriCloud App via Bluetooth during the following 5 minutes. After that 5-minute period, then establish the Bluetooth connection between the Wi-Fi module and the MatriCloud App. Once successfully connected, perform the operation to restart the Wi-Fi module via the MatriCloud App. This operation helps accelerate the establishment of the Wi-Fi module's connection to the Wi-Fi network.